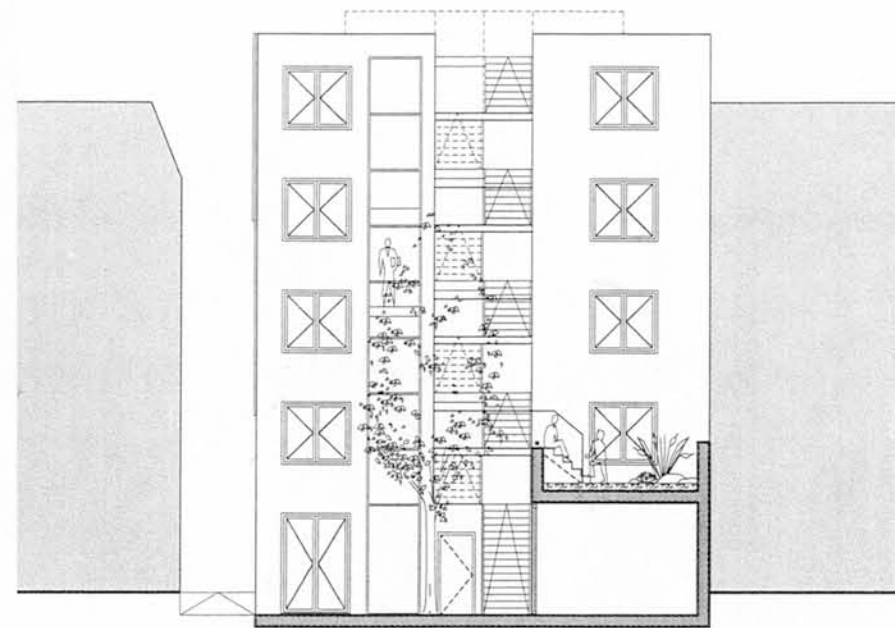
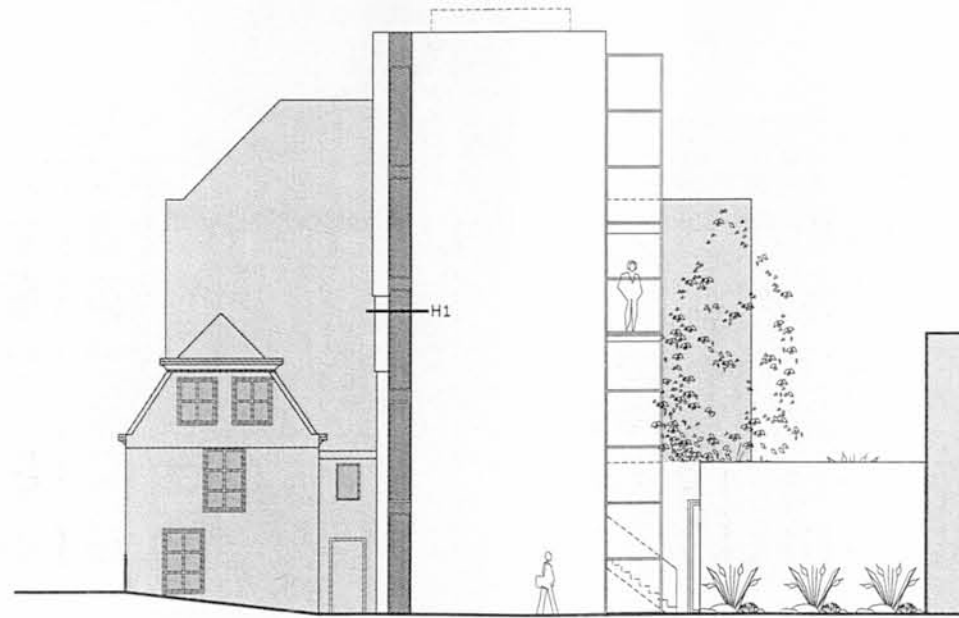
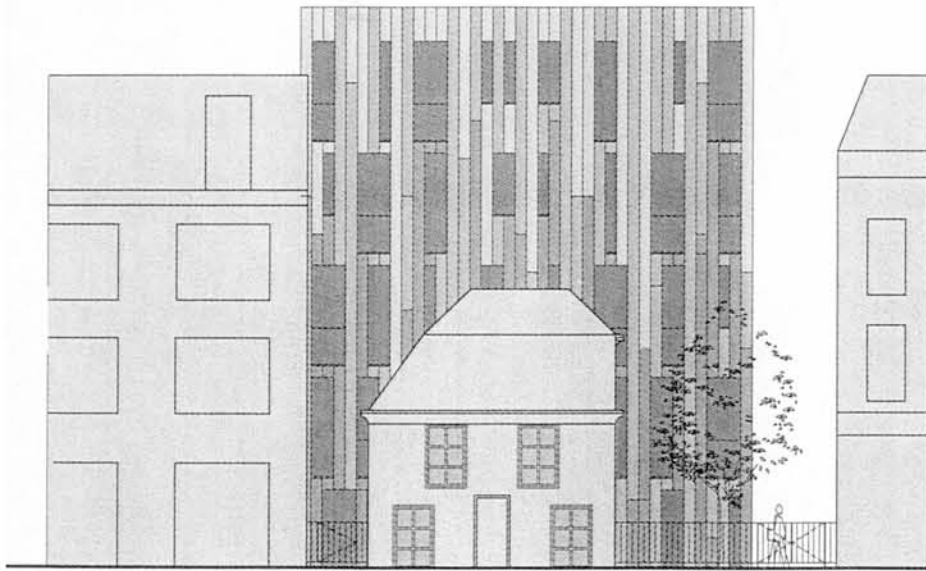
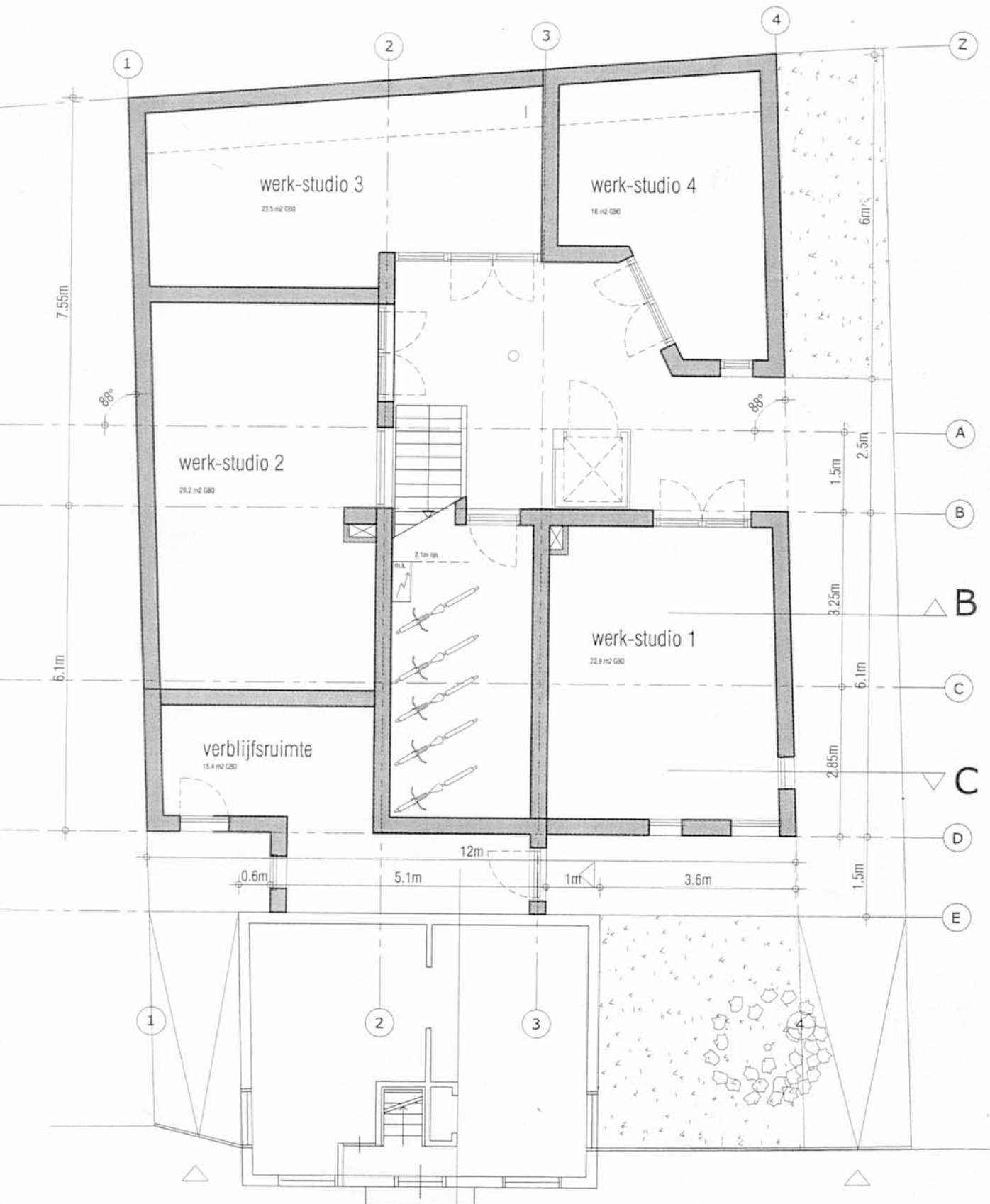




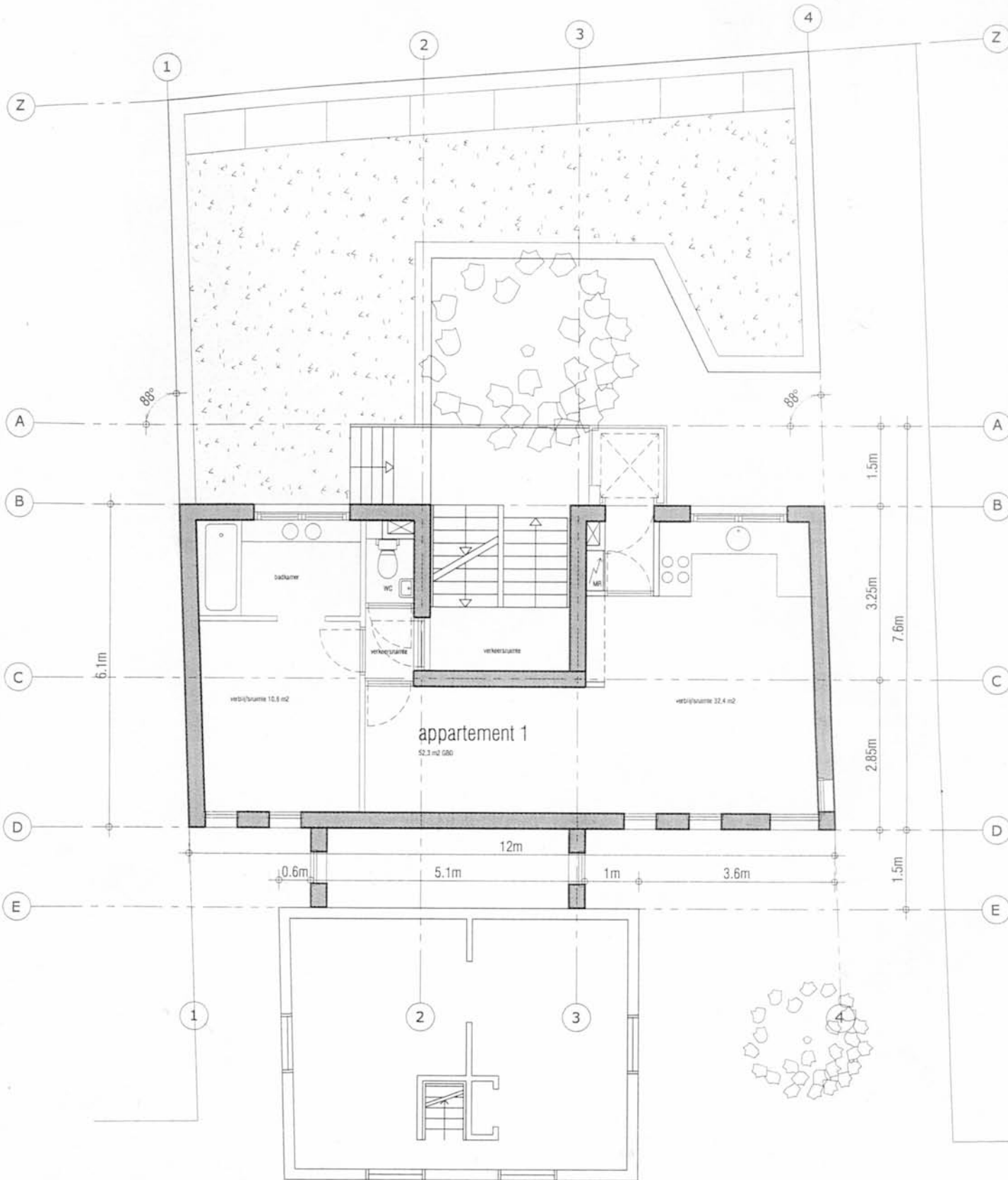
- ▽ + 14.80 m
- ▽ + 14.20 m
- ▽ + 13.00 m
- ▽ + 11.24 m
- ▽ + 8.28 m
- ▽ + 5.32 m
- ▽ + 4.00 m
- ▽ + 3.00 m
- ▽ + 2.36 m
- ▽ peil = 0
- ▽ - 0.60 m



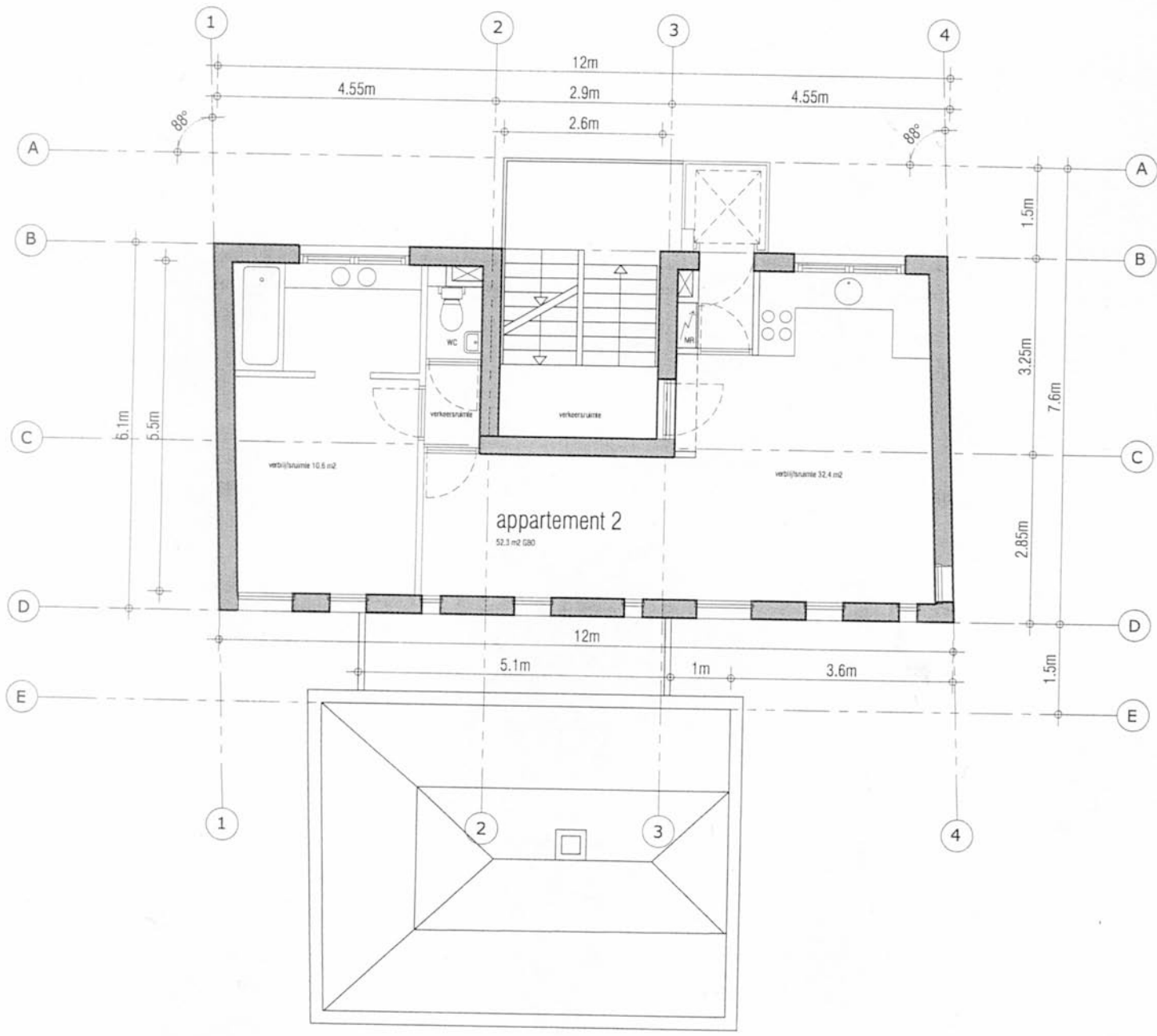


BG
-0.60m +P

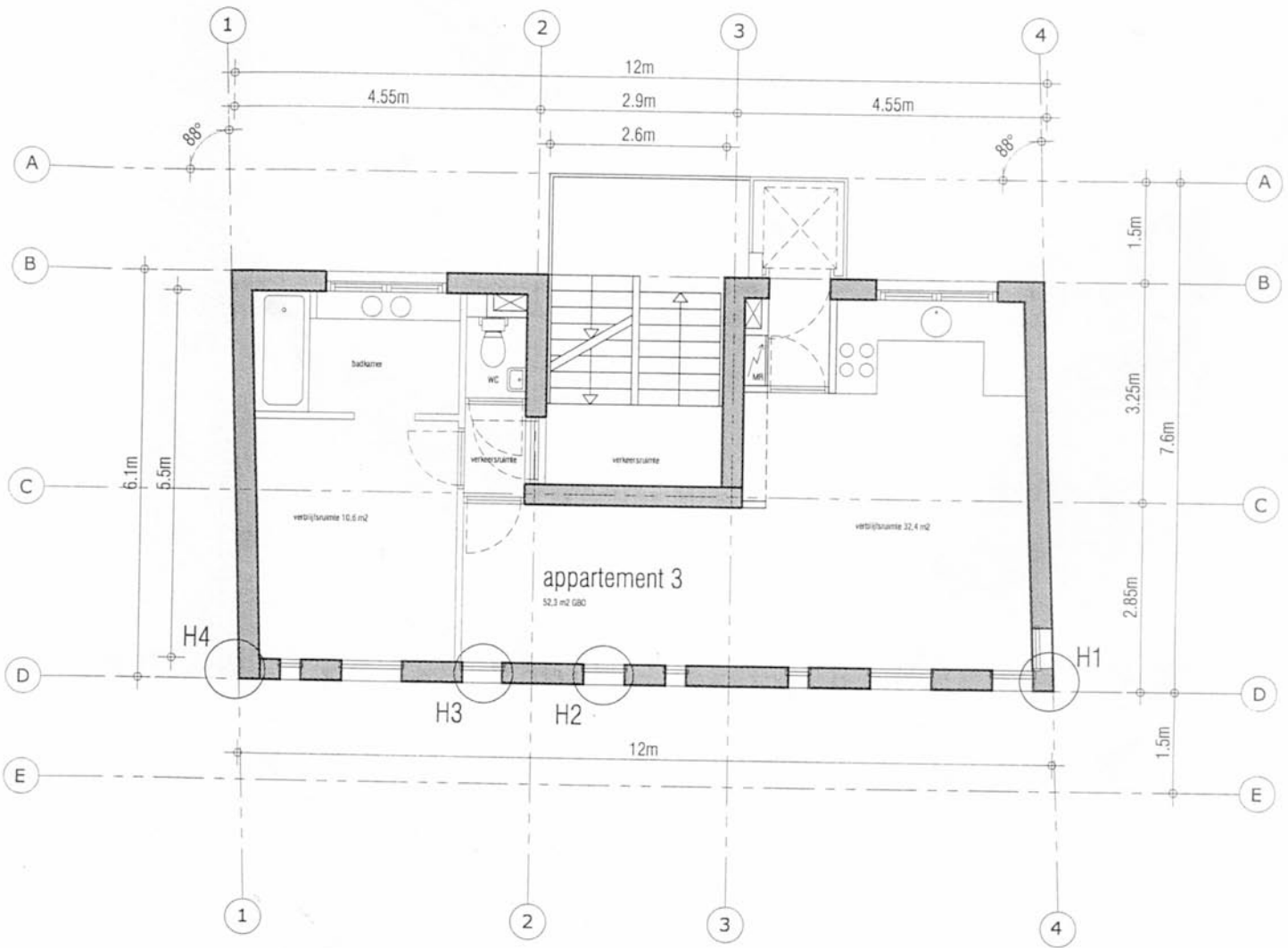
A



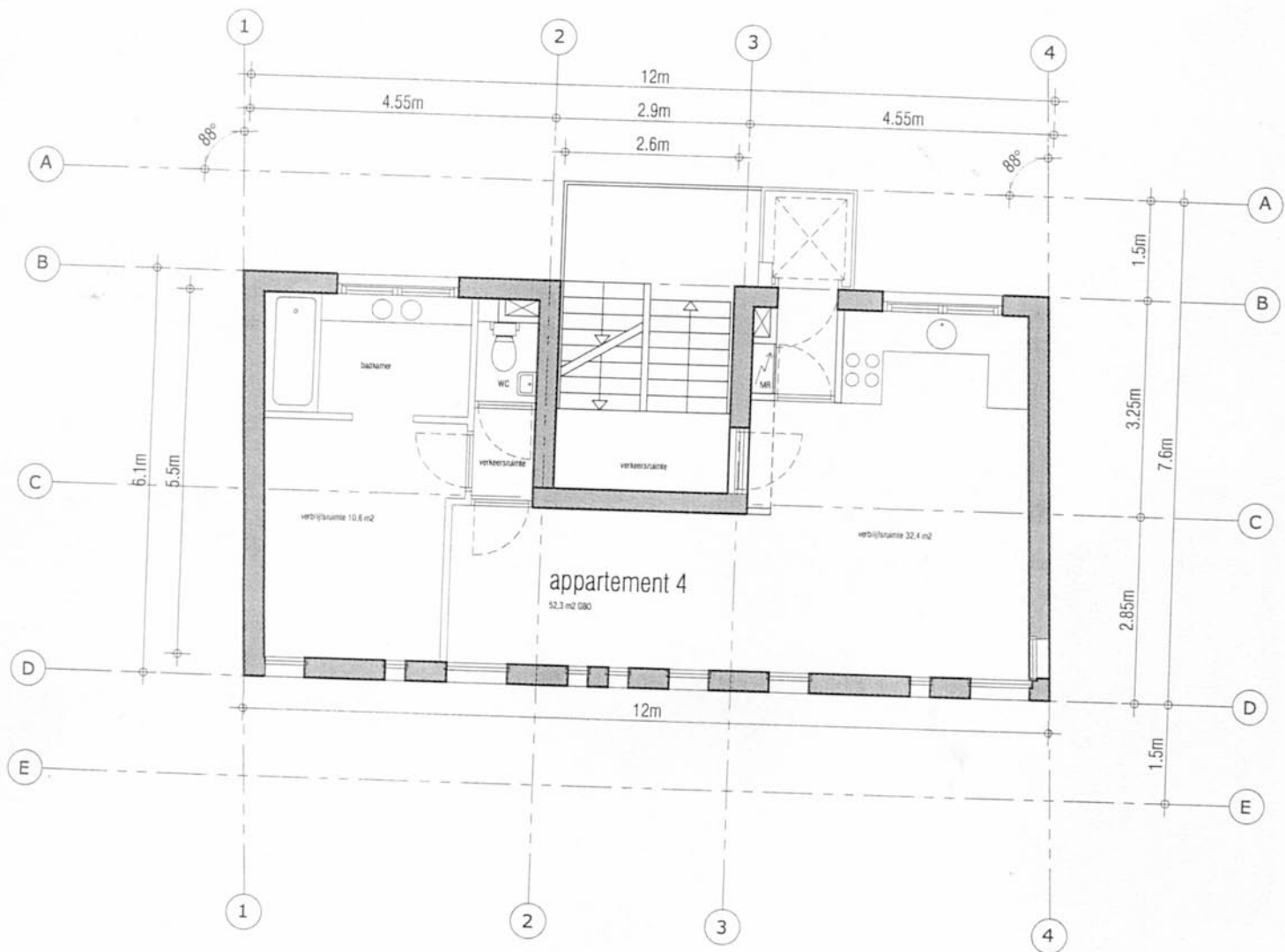
NIVO 1
+2.36m +P



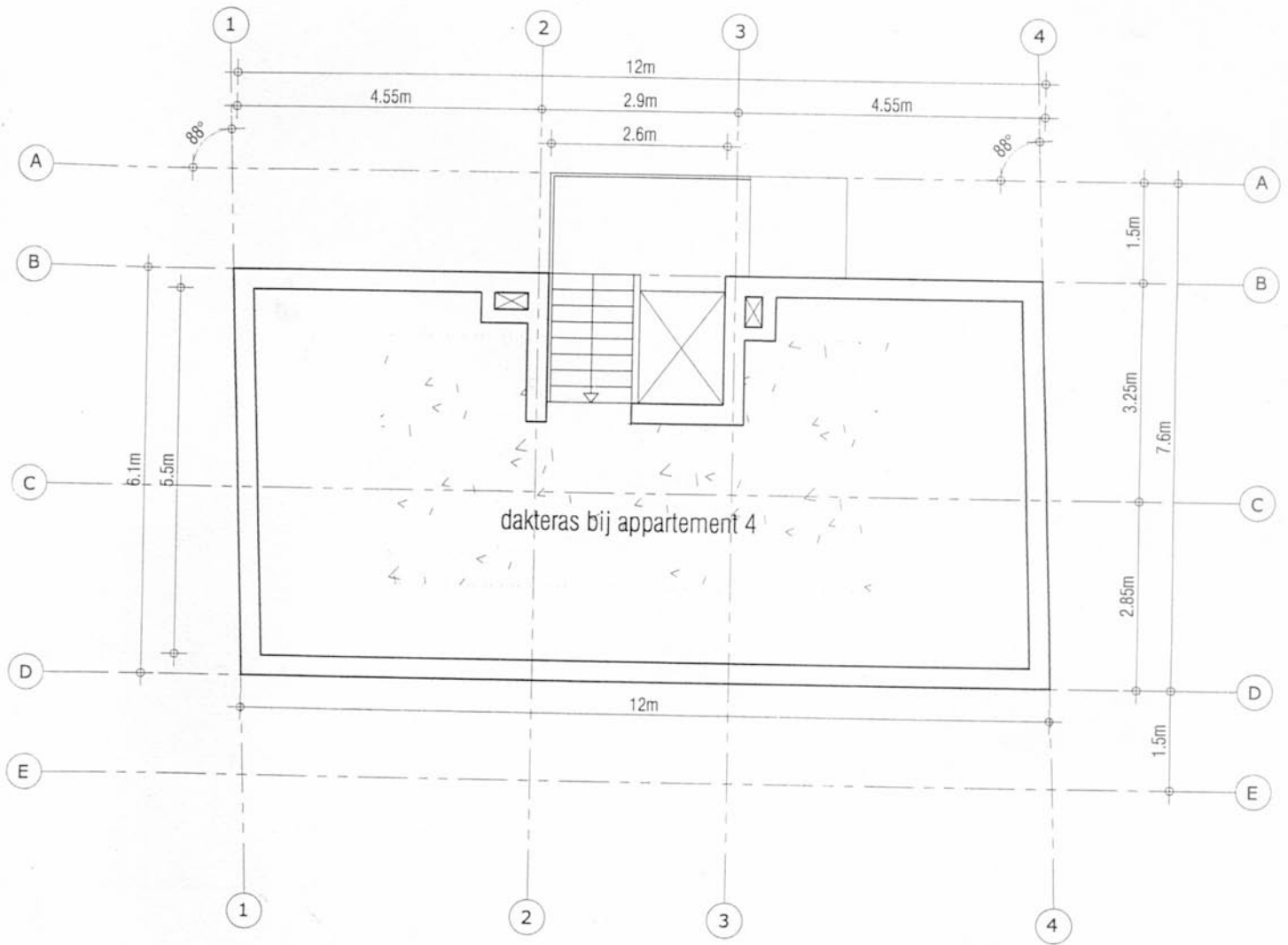
NIVO 2
+5.32m +P



NIVO 3
+8.28m +P



NIVO 4
 +11.24m +P



DAKPLAN
 +14.20m +P

